

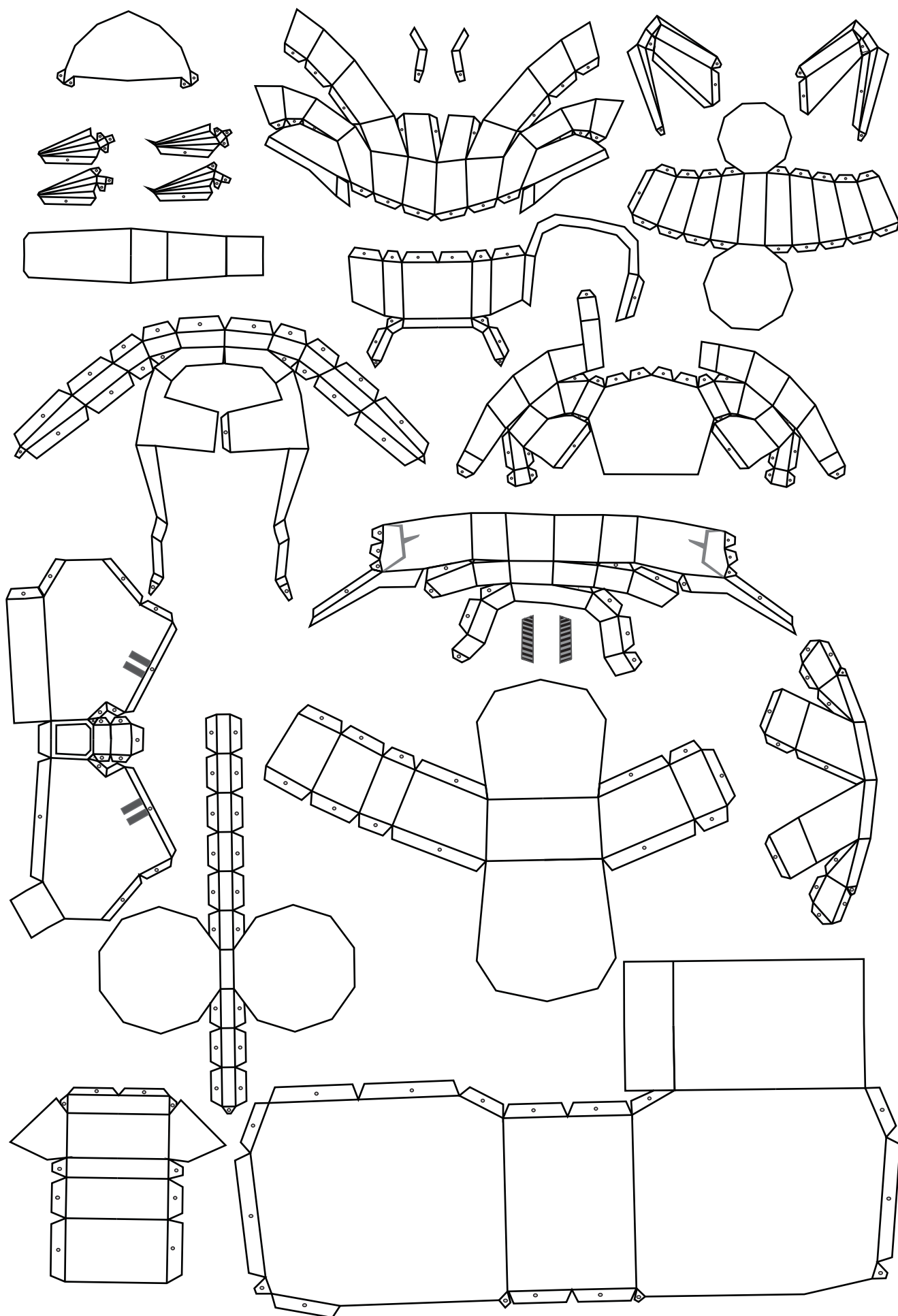
1

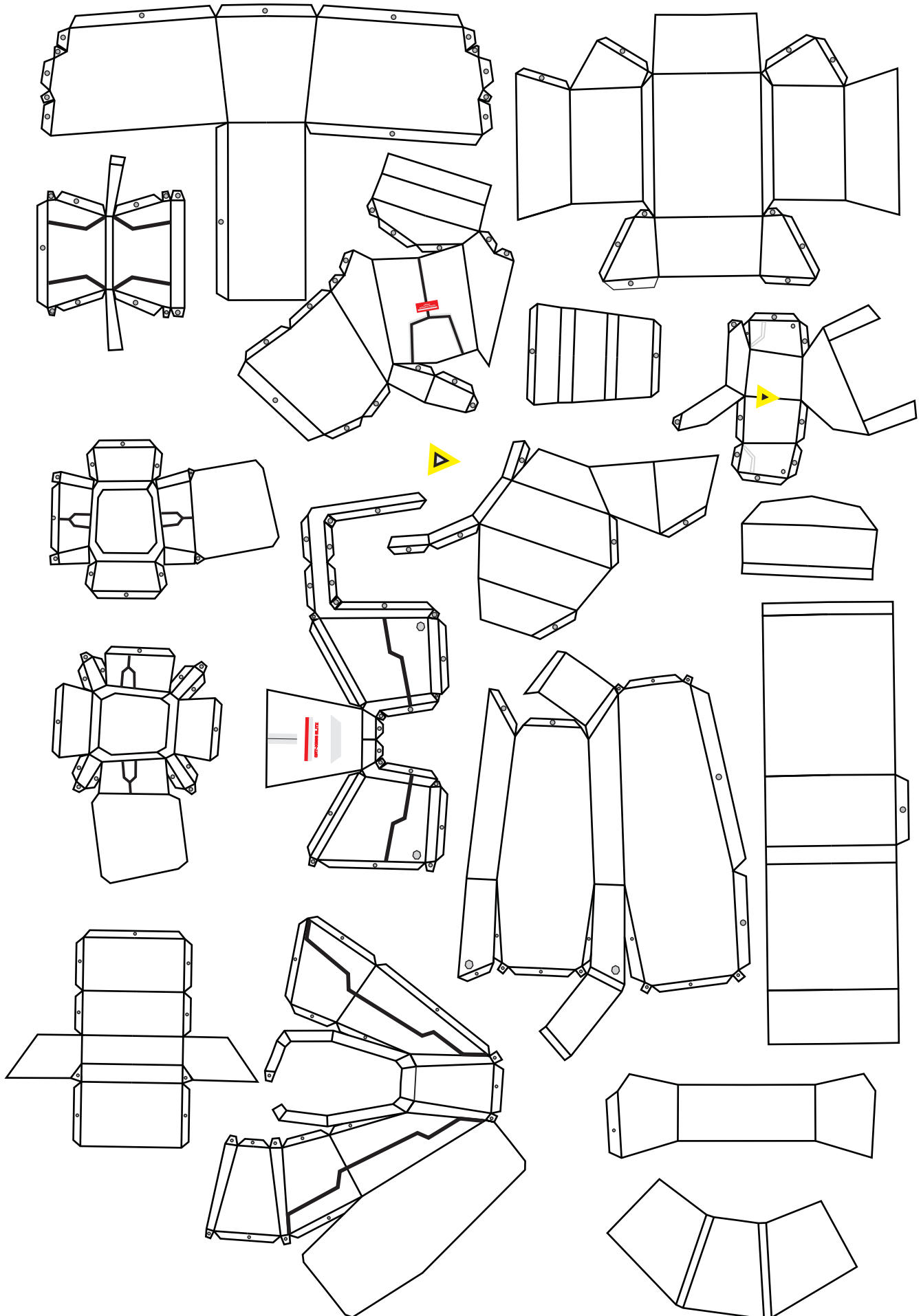
BLACK

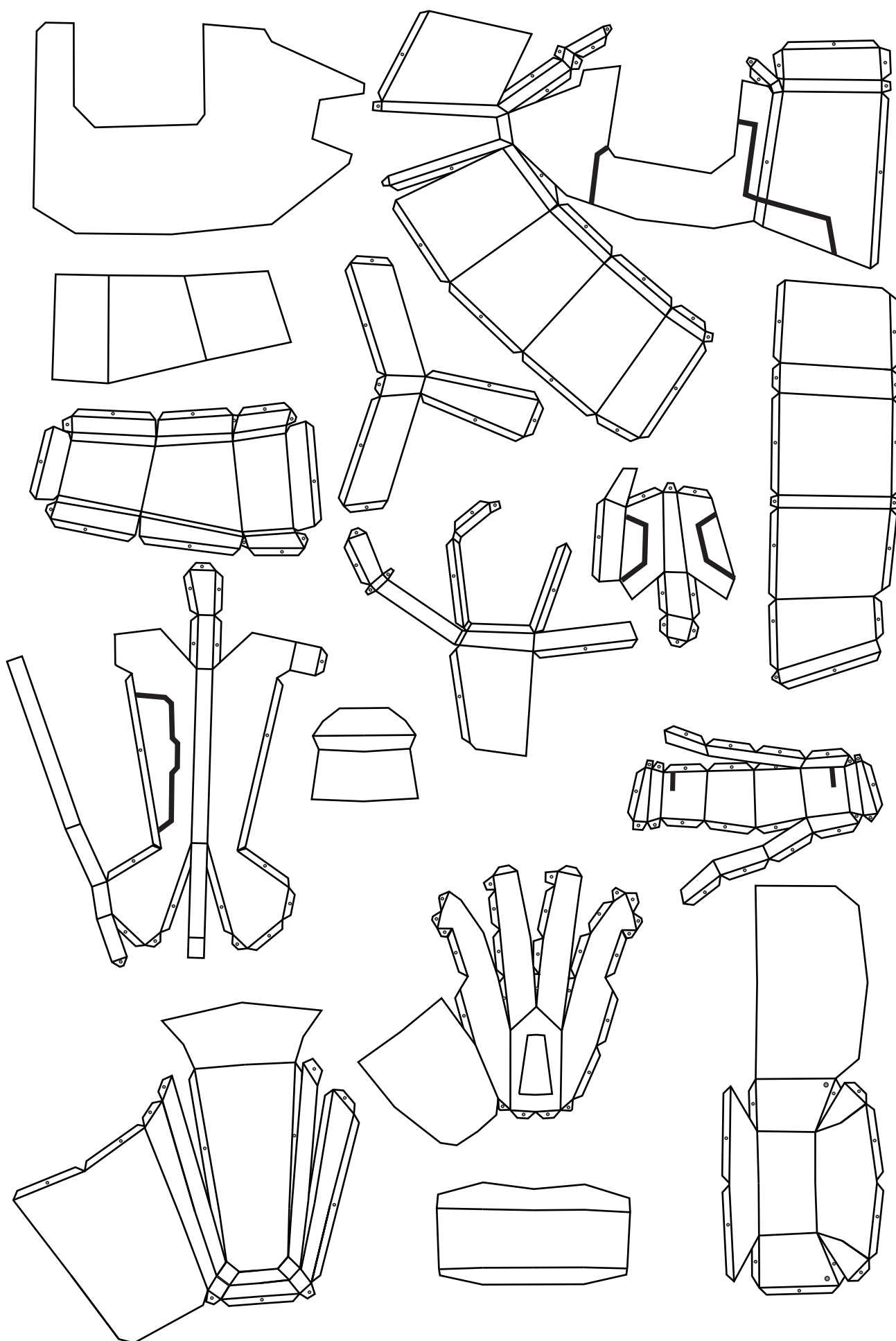
GAT-X207 BLITZ GUNDAM

ver Hikaru11

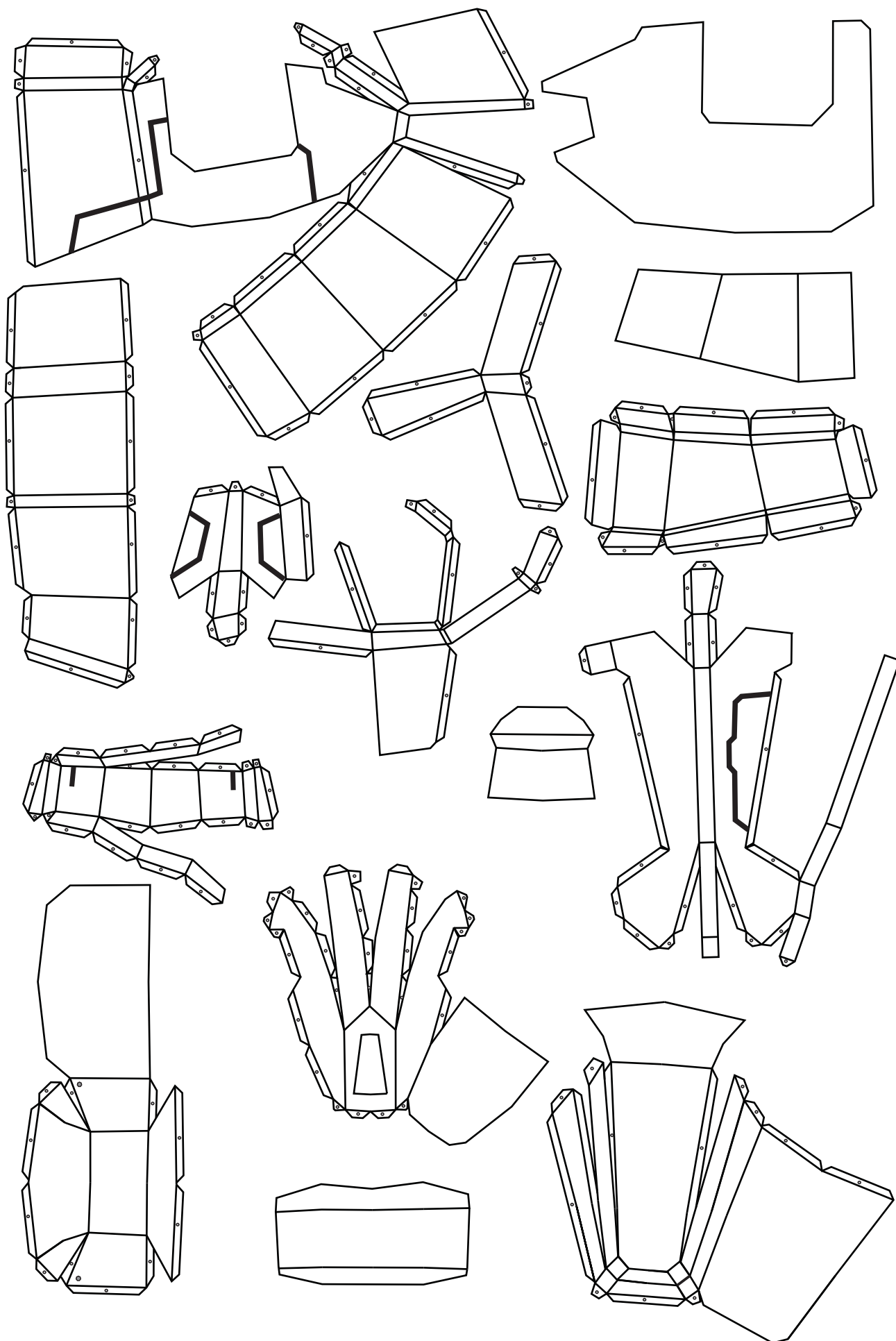
Design by Calvin Dian Pratama

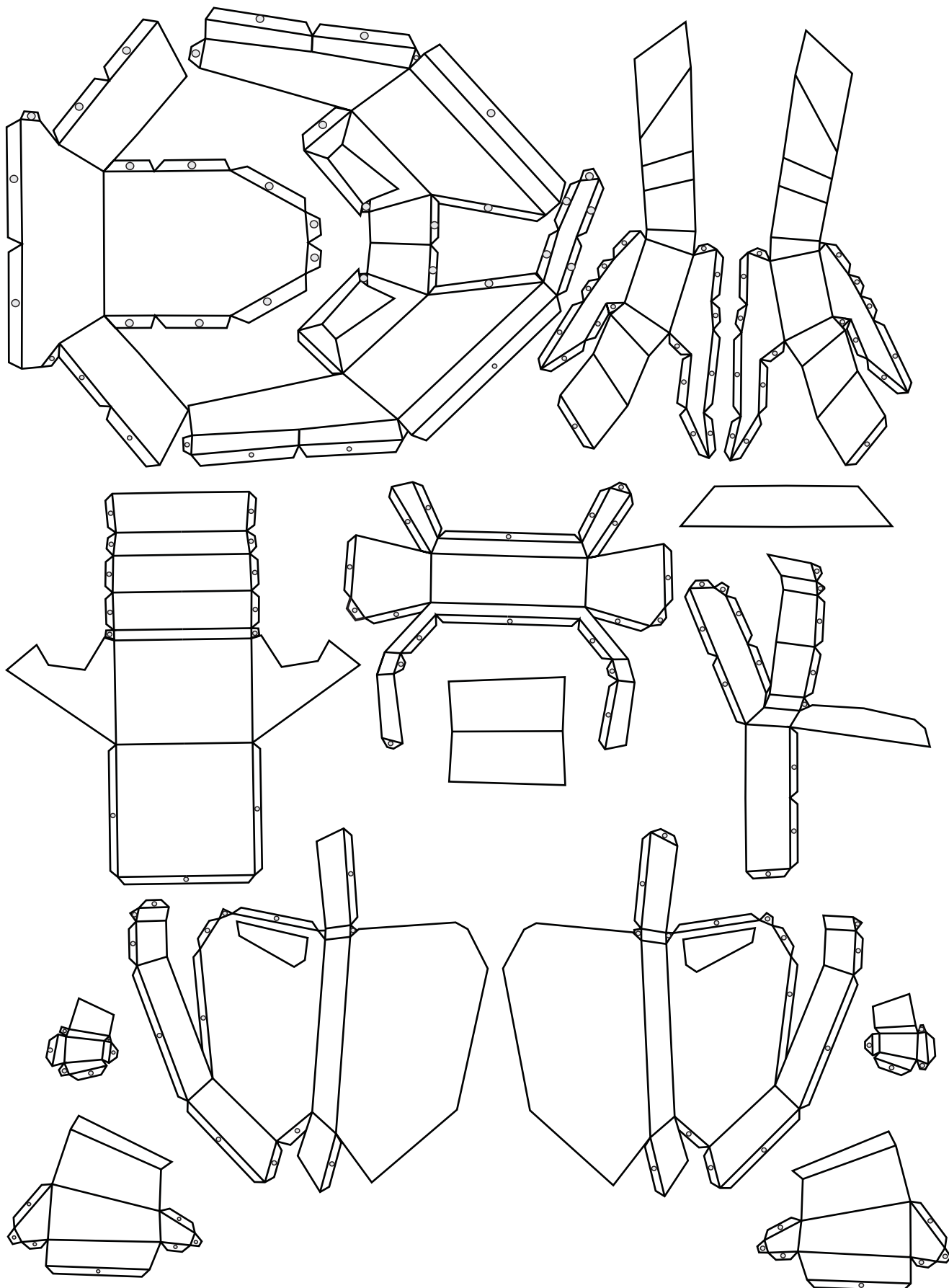


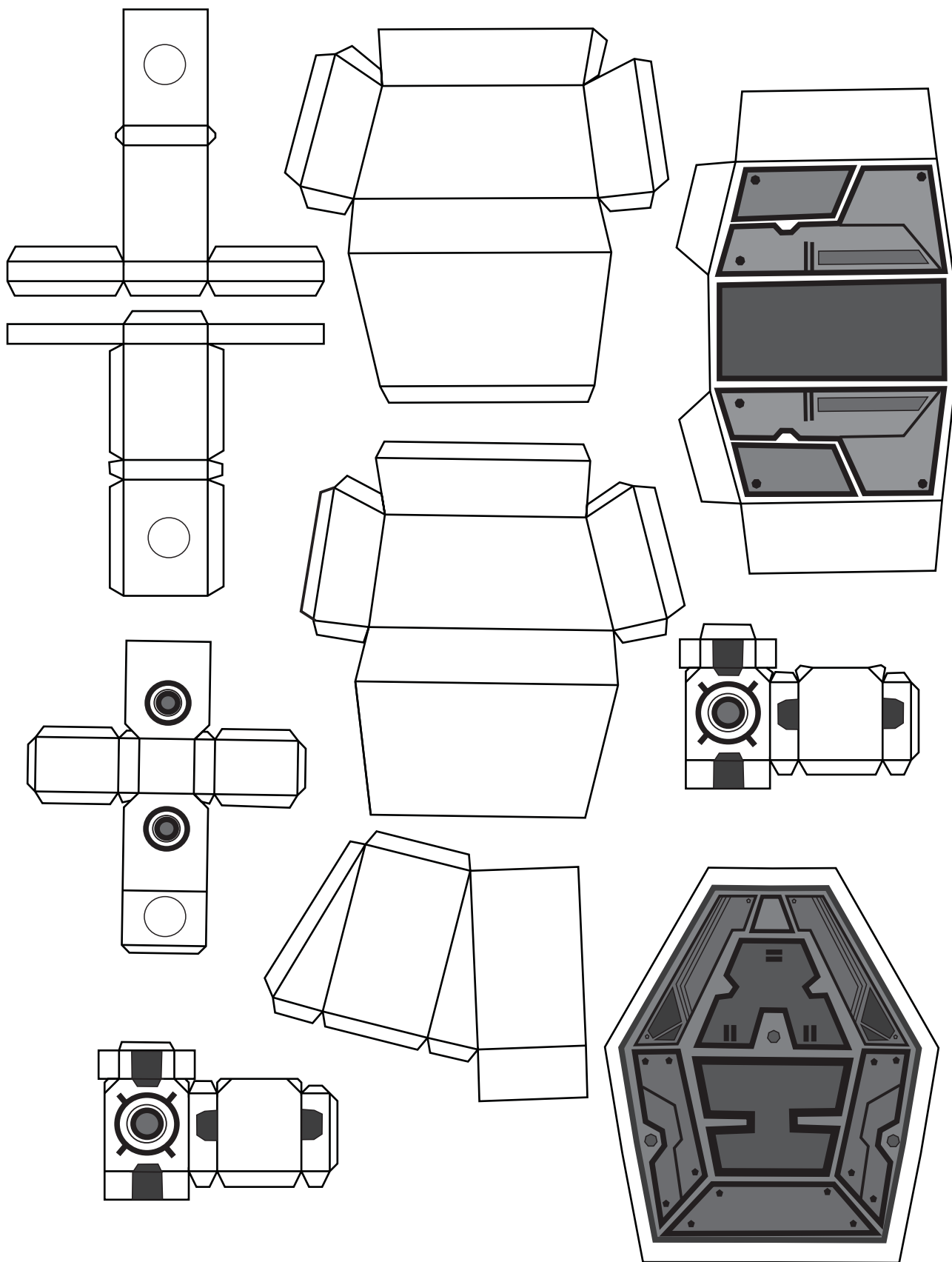


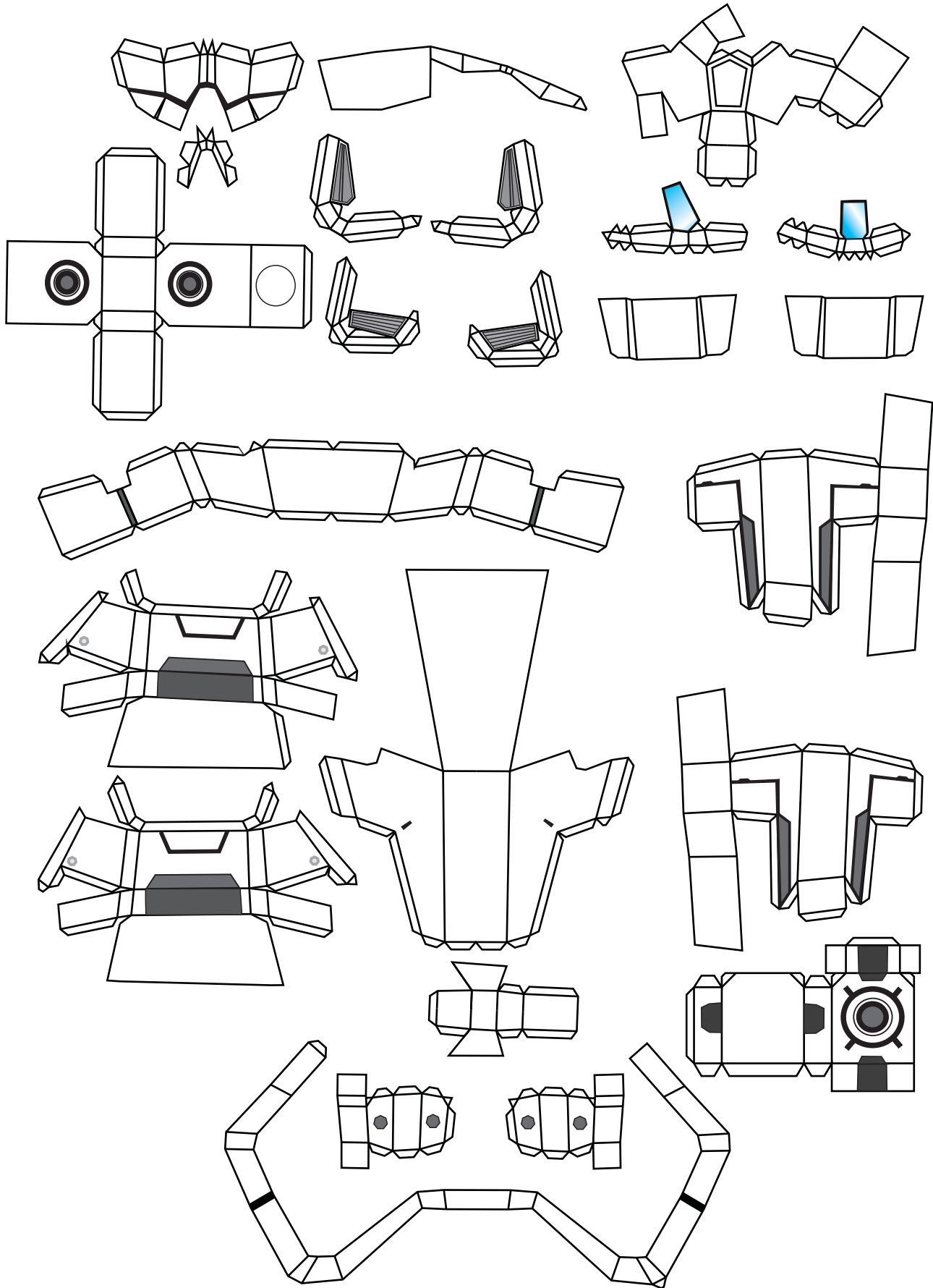


1	2	3	4	5	6	7	8	9	10	11	12	13	14	15
---	---	---	---	---	---	---	---	---	----	----	----	----	----	----







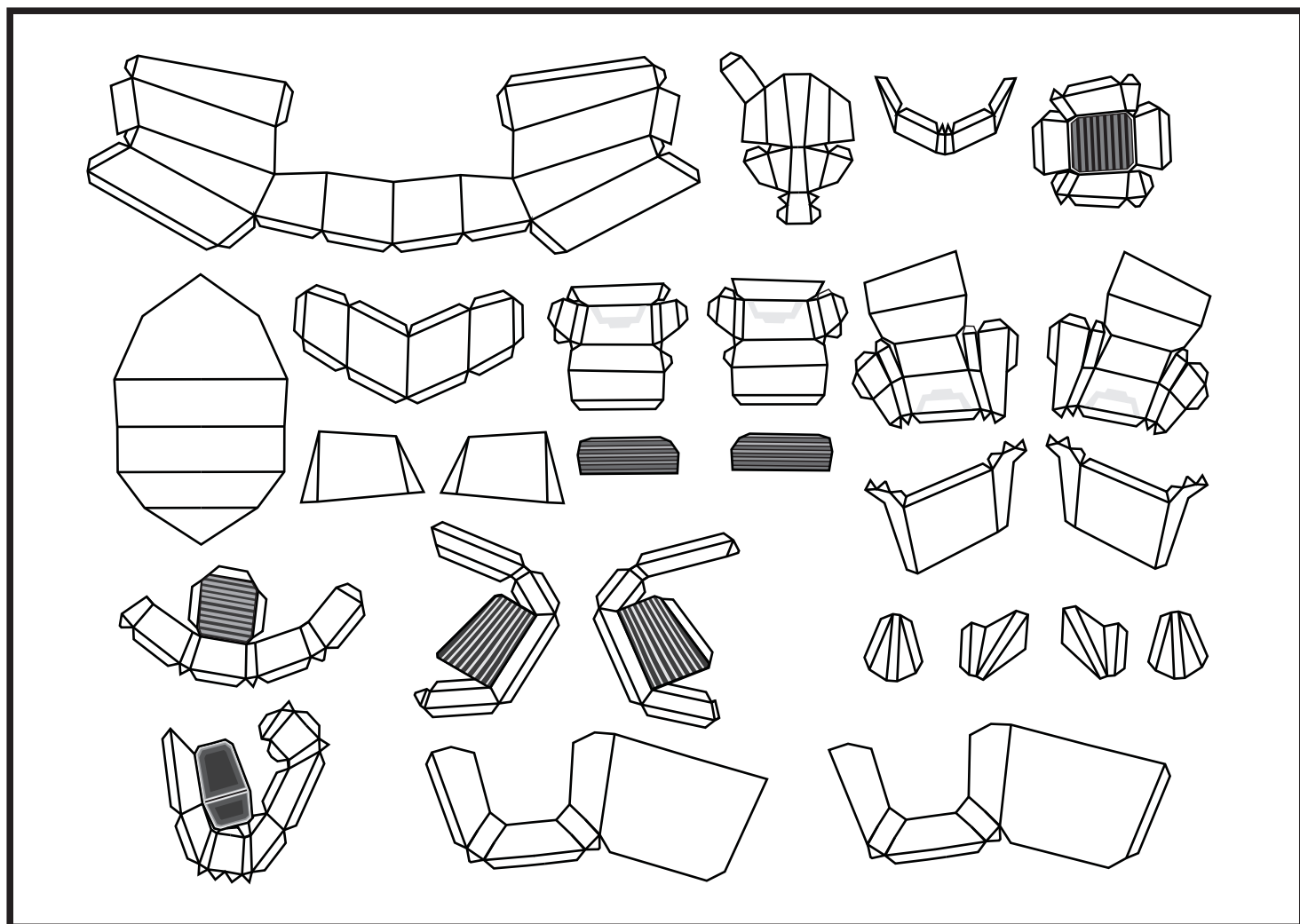


This image displays a collection of 15 line-art templates for a paper model, arranged on a white background. The templates are categorized as follows:

- Top Row:** Four rectangular panels. The first two on the left are complex, multi-faceted structures. The next two are simpler, elongated rectangles with internal fold lines.
- Second Row:** Two tall, narrow rectangular panels on the left, and a small, complex circular component on the right.
- Third Row:** Two small, complex circular components on the left, and a large, complex rectangular panel on the right featuring two circular cutouts.
- Bottom Row:** A long, narrow rectangular panel on the left, and a large, complex rectangular panel on the right featuring two circular cutouts.

 The templates are designed to be cut out and assembled into a three-dimensional model.

Red



Yellow

