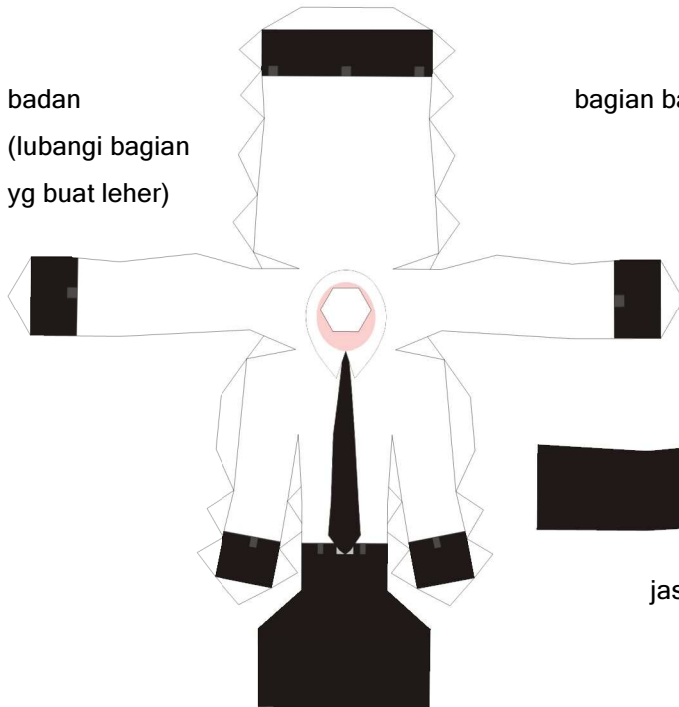
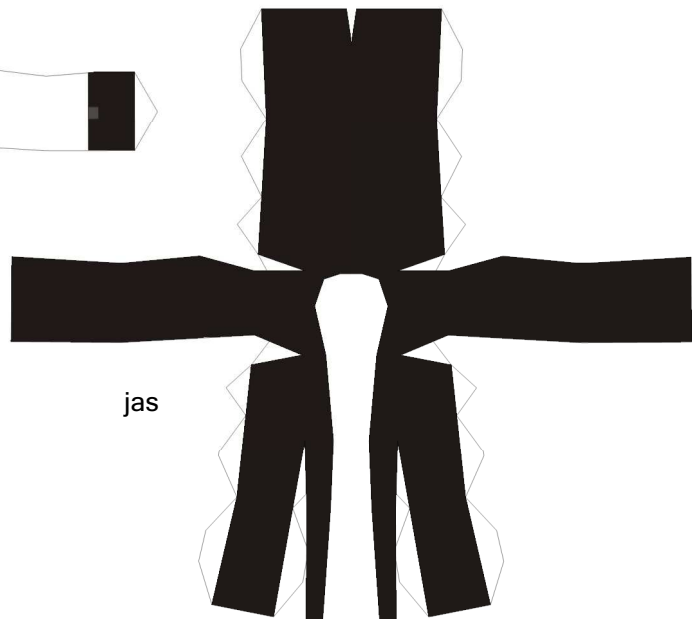


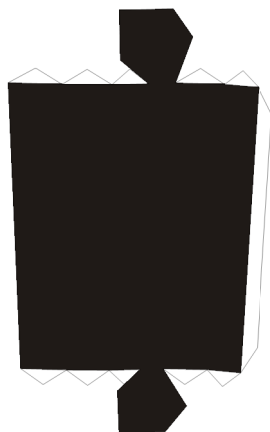
badan
(lubangi bagian
yg buat leher)



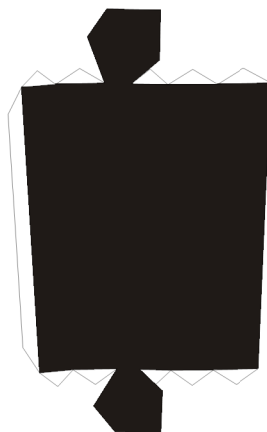
bagian bawah kepala (lubangi yg bagian bolongnya)



jas



kaki kanan



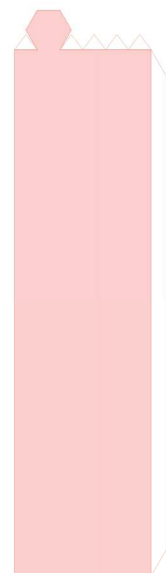
kaki kiri



kerah jas



rambut atas

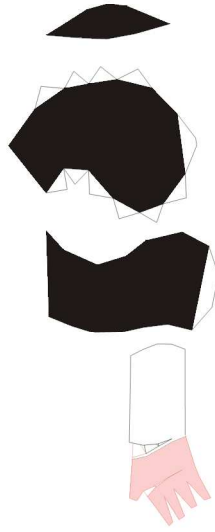
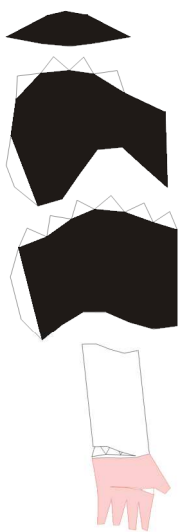


leher



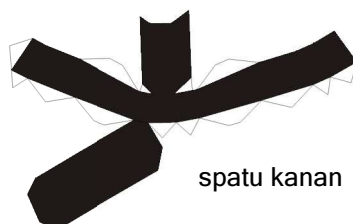
poni (disambung ke rambut atas)

lengan kanan



lengan kiri
bagian ngejreng2

tangan kanan
(masuk ke dlm lubang jas lengan
dan pegang gagang gitar alias kidal)



spatu kanan



spatu kiri